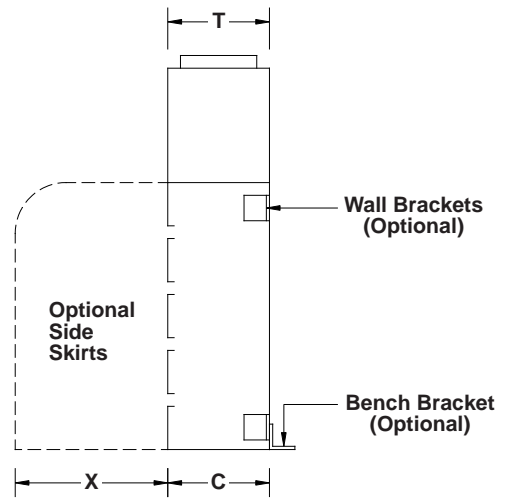
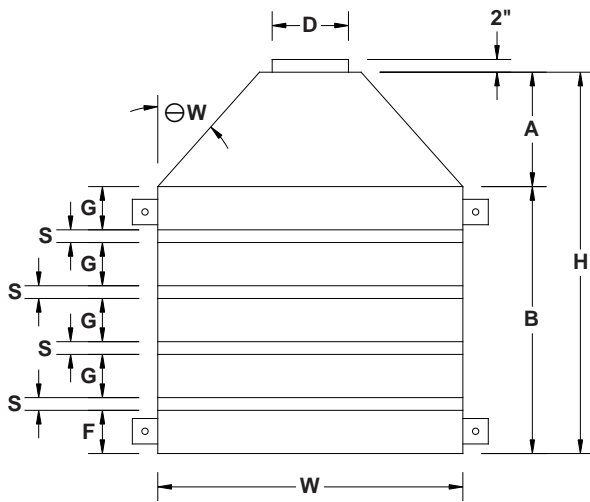
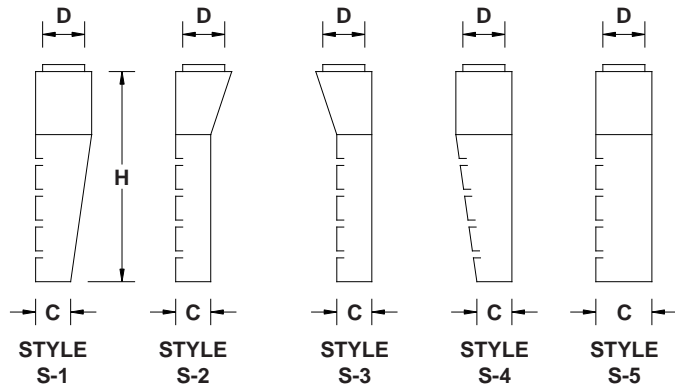


SLOTTED BACK SHELF INDUSTRIAL HOODS

TYPICAL USES: Welding, tank venting, high toxicity venting.



CFM GUIDELINES: 350 CFM per foot of hood width (W). Slots sized for 2,000 FPM.

CONSTRUCTION: All welded 18 GA. galvanized steel, 18 GA. 304 or 316 stainless steel with 2B finish or .063 aluminum. Heavier gauges available: 16, 14, 12 and 10.

DIMENSIONS: As required for job conditions. Available in single or multiple sections. Standard are four equally spaced 1/2 inch slots. All other number and widths of slots available.

Qty.	Style	Material	Gauge	No. of Sections	W	H	A	B	C	$\ominus W$	Nominal D	Actual O.D. / I.D.

F	G	T	No. of Slots	S	No. of Side Skirts	X	Finish	Options	Tag

To maintain KEES' policy of continuous product development, we reserve the right to change prices, specifications, ratings and dimensions without notice or obligation.

Project		Location	
Engineer		Dwg. No.	
Architect		SD-SMBS	
Contractor		Date	



KEES INCORPORATED
 400 S. Industrial Dr.
 Elkhart Lake, WI 53020
 Phone: (920) 876-3391
 Fax: (920) 876-3065
 Website: www.kees.com