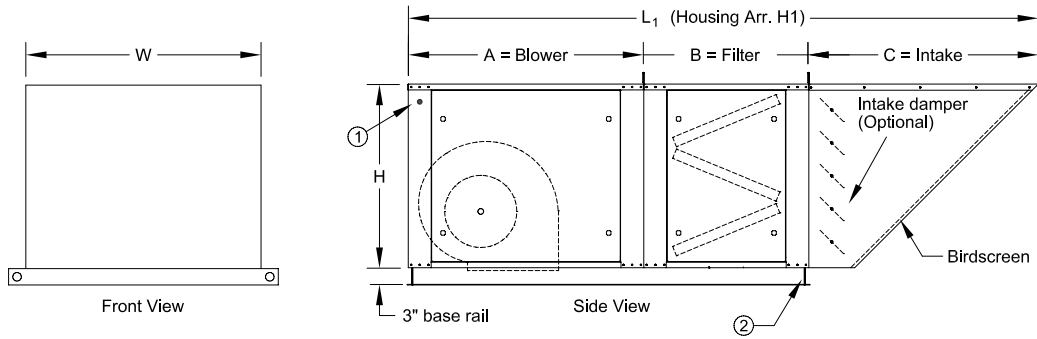


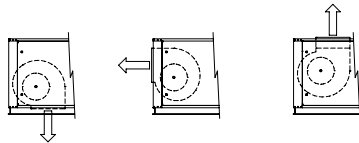
MODEL NTS NON-TEMPERED SUPPLY UNIT



- ① Electrical connection
② Lifting lugs (4)

Select one:

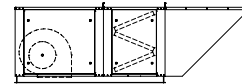
- ☐ Down Discharge
☐ End Discharge
☐ Top Discharge



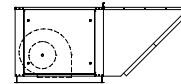
Select one:

- ☐ H1 Housing
☐ H2 Housing
☐ H3 Housing
☐ H4 Housing

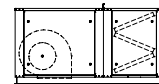
H1 Housing
V-bank filters with intake hood



H2 Housing
Flat filters in the intake hood

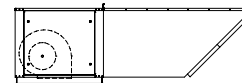


H3 Housing
V-bank filters, no intake hood



* Optional intake damper adds 8\"/>

H4 Housing
Extended intake hood with filters



Notes:

- Intake hood ships loose.
- Access doors typical on both sides.
- Refer to SD-NTS-INFO for CFM ranges, filter sizes, weights, curb cap sizes, blower openings, and a bottom view.
- Refer to SD-NTS-CURB for curb options and dimensions.
- Refer to SD-MUA, DFG, IFG or EVAP for Tempered Make-up Air Units.
- Housing Arrangement H4 is used on projects that must meet NFPA 96 requirements. Without the extended intake included in this arrangement, small NTS units would not have the necessary ten foot separation between their intake and the exhaust fan discharge when these fans are placed together on a modular curb.

Model	Housing	A	B	C	D	L ₁	L ₂	L ₃ *	L ₄	H	W
						H1 Hsg.	H2 Hsg.	H3 Hsg.	H4 Hsg.		
NTS-109	#1	33	28	34	85	95	67	61	118	26	33
NTS-110											
NTS-112	#2	41	29	40	77	110	81	70	118	32	41
NTS-115											
NTS-118	#3	57	28	54	NA	139	111	85	NA	46	52.5
NTS-120											
NTS-218	#4	57	28	54	NA	139	111	85	NA	46	101
NTS-220											

To maintain KEES' policy of continuous product development, we reserve the right to change prices, specifications, ratings and dimensions without notice or obligation.

Project	Location		
Engineer			
Architect	Dwg. No.	SD-NTS	
Contractor	Date	08/09	



KEES INCORPORATED
400 S. Industrial Dr.
Elkhart Lake, WI 53020
Phone: (920) 876-3391
Fax: (920) 876-3065
Website: www.kees.com

MODEL NTS NON-TEMPERED SUPPLY UNIT

Qty.	Model	CFM	S.P.	BHP	RPM	HP	Volts	Phase	Tag

General Construction

Housing

- Galvanized steel
- 1" fiberglass insulation
- Weatherproof construction
- Large access panels

Housing Options

- ☐ Painted housing - machinery grey
- ☐ Painted housing - special color: _____
- ☐ Double wall insulation
- ☐ Foil faced insulation
- ☐ Hinged access doors

Blower Section

- Forward curved, DWDI blower
- Precision machined steel shaft
- Blower wheels statically and dynamically balanced
- Adjustable V-belt drives
- Pulleys and belts selected for not less than 165% of driven HP
- Fan and motor mounted on vibration isolators
- Self-aligning pre-lubricated bearings
- EPACT rated motor
 - ☐ ODP (standard)
 - ☐ TEFC
 - ☐ Two speed
 - ☐ Other _____

Electrical

- Unit is field wired (standard)
- Optional
 - ☐ Disconnect switch only (mounted and wired to motor)
 - _____ NEMA1
 - _____ NEMA3R
 - ☐ Motor control center with disconnect switch, one motor starter, fuse blocks and control transformer; single point wiring.
 - ☐ Extra motor starters:
 - _____ HP
 - _____ HP
 - ☐ Other _____

Optional Accessories

Damper Options

- ☐ Motorized intake damper (mounted)
- ☐ Motorized discharge damper (field installed)
- ☐ End switch on damper

Curb Options

- _____ Height
- ☐ Modular curb and legs (Arrangement A1)
- ☐ Roof curb and legs (Arrangement A2)
- ☐ Two support rails (Arrangement A3)
- ☐ Full perimeter curb (Arrangement A4)

Filter Options

- _____ Thickness
- ☐ Aluminum cleanable
- ☐ Fiberglass throw-away (V-bank only)
- ☐ 30% efficient pleated (V-bank only)
- ☐ Other _____

Other Options

- ☐ Remote control panel
- Enclosure - surface mounted
 - ☐ NEMA12 plastic enclosure (standard)
 - ☐ Metal enclosure (NEMA rating: _____)
- 2-Position switches
 - ☐ Fan ☐ Hood lights
- Indicator lights
 - ☐ Fan ☐ Hood lights
 - ☐ Alarm ☐ Filter ☐ Other _____
- 3-Position switches
 - ☐ Fan-Off-Auto ☐ Other _____
- ☐ Clogged filter switch
- ☐ Convenience outlet (115V service receptacle)
- ☐ Discharge diffuser (3-way or 4-way)
- ☐ Other _____

To maintain KEES' policy of continuous product development, we reserve the right to change prices, specifications, ratings and dimensions without notice or obligation.

Project		Location	
Engineer			
Architect		Dwg. No.	SD-NTS
Contractor		Date	08/09



KEES INCORPORATED
 400 S. Industrial Dr.
 Elkhart Lake, WI 53020
 Phone: (920) 876-3391
 Fax: (920) 876-3065
 Website: www.kees.com

MODEL NTS GENERAL INFORMATION

CFM Information

Model	Housing Size	Blower CFM Limits	
		Minimum	Maximum
NTS-109-SM	#1	600	1,600
NTS-109		1,000	2,600
NTS-110		1,200	3,600
NTS-112	#2	1,800	5,000
NTS-115		3,000	7,000
NTS-118		4,000	10,000
NTS-120	#3	5,000	12,000
NTS-120-HD		5,000	15,000
NTS-218		7,200	20,000
NTS-220	#4	10,000	30,000

Filter Information

Model	Housing Size	V-bank Filters		Filters in Intake Hood		Special Filters*	
		Quantity/ Area	CFM @ 500 FPM	Quantity/ Area	CFM @ 500 FPM	Quantity/ Area	CFM @ 500 FPM
NTS-109-SM	#1	(4) 16" x 20"	4,400	(2) 16" x 25"	2,800	(2) 16" x 20"	2,200
NTS-109		8.9 Sqft.		5.6 Sqft.		4.4 Sqft.	
NTS-110							
NTS-112	#2	(6) 20" x 20"	8,300	(4) 20" x 20"	5,600	(2) 20" x 25"	3,500
NTS-115		16.7 Sqft.		11.1 Sqft.		6.9 Sqft.	
NTS-118		(8) 16" x 20"	14,400	(6) 20" x 25"	10,400	(4) 20" x 25"	6,900
NTS-120	#3	(4) 20" x 20"		20.8 Sqft.		13.9 Sqft.	
NTS-120-HD		28.9 Sqft.					
NTS-218		(16) 20" x 25"	27,800	(12) 20" x 25"	20,800	(8) 20" x 25"	13,900
NTS-220	#4	55.6 Sqft.		41.7 Sqft.		27.8 Sqft.	

* Examples of special filters would include 6" and 12" deep high efficiency filters. These would be located in a flat bank in the standard filter section.

Weight Information

Model	Housing Size	Housing Arrangement				Intake Damper	Modular	Full Perimeter
		H1	H2	H3	H4		Curb & Rail	Curb
NTS-109-SM	#1	390#	310#	320#	360#	50#	160#	90#
NTS-109		400#	320#	330#	370#			
NTS-110		420#	340#	350#	390#			
NTS-112	#2	660#	570#	560#	630#	60#	180#	100#
NTS-115		700#	610#	600#	670#			
NTS-118		900#	800#	720#	NA	70#	200#	120#
NTS-120	#3	1,000#	900#	820#				
NTS-120-HD		1,020#	920#	840#				
NTS-218		1,900#	1,780#	1,610#	NA	100#	220#	160#
NTS-220	#4	2,000#	1,880#	1,710#				

To maintain KEES' policy of continuous product development, we reserve the right to change prices, specifications, ratings and dimensions without notice or obligation.

Project	Location		
Engineer			
Architect	Dwg. No.	SD-NTS-INFO	
Contractor	Date	05/06	

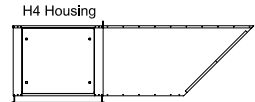
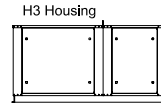
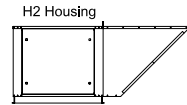
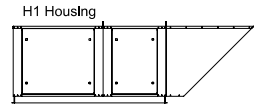


KEES INCORPORATED
 400 S. Industrial Dr.
 Elkhart Lake, WI 53020
 Phone: (920) 876-3391
 Fax: (920) 876-3065
 Website: www.kees.com

MODEL NTS GENERAL INFORMATION

Base Rail / Curb Cap Information

Model	Housing Size	A	B	H1, H3 Housing Arrangement C	H2, H4 Housing Arrangement C
NTS-109-SM	#1	32.00	32.00	60.00	32.00
NTS-109					
NTS-110					
NTS-112	#2	40.00	40.00	68.75	40.00
NTS-115					
NTS-118	#3	51.50	56.25	84.50	56.25
NTS-120					
NTS-120-HD					
NTS-218	#4	99.50	56.25	84.50	56.25
NTS-220					



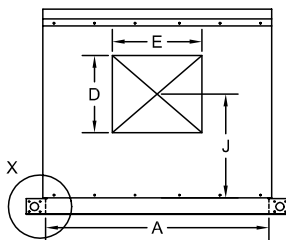
Note: All of the dimensions are measured to the inside of the base rail / curb cap. Undersize the O.D. of the curb accordingly.
 Dimension B is the curb cap measurement for Curb Arrangements A1 and A2 where the curb is under the blower section only.
 Dimension C is the curb cap measurement for Curb Arrangement A4 where the curb is around the full perimeter of the unit.
 The first dimension C listed is for Housing Arrangements H1 and H3 that have the V-bank filter section.
 The second dimension C is for Housing Arrangements H2 and H4. It is smaller since the V-bank filter section is replaced by flat filters in the intake section.

Blower Opening Information

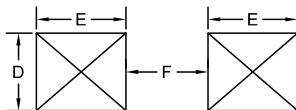
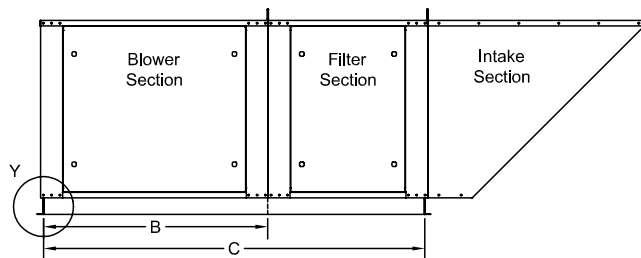
Model	Housing Size	D	Blower Opening E	F	Down Discharge G	End Discharge J
NTS-109-SM	#1	10.25	7.00	NA	12.50	15.50
NTS-109		10.25	12.00	NA	12.50	15.50
NTS-110		11.50	13.25	NA	12.50	15.50
NTS-112	#2	13.50	15.75	NA	17.50	20.50
NTS-115		16.00	18.75	NA	17.50	20.50
NTS-118	#3	19.00	22.00	NA	25.00	24.50
NTS-120		24.75	22.75	NA	25.00	24.50
NTS-120-HD		24.75	24.75	NA	25.00	24.50
NTS-218	#4	19.00	22.00	18.00	25.00	20.75
NTS-220		24.75	24.75	20.00	25.00	24.50

Note: Blower openings are centered on the width of the unit. Dim. G is from the inside of the curb cap. Dim. J is measured from the bottom of the unit.

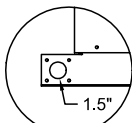
END VIEW



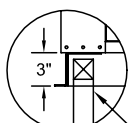
SIDE VIEW



Twin Blowers

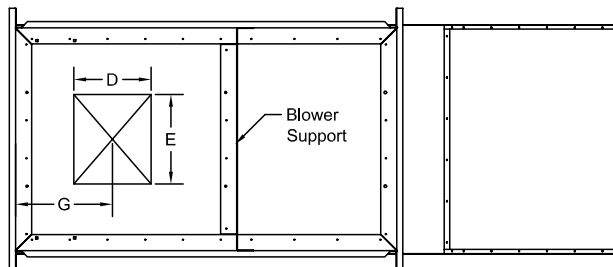


Detail X
Lifting Lug



Detail Y
Base Rail

Curb



BOTTOM VIEW

Note: The views shown above are of Housing Arrangement H1.