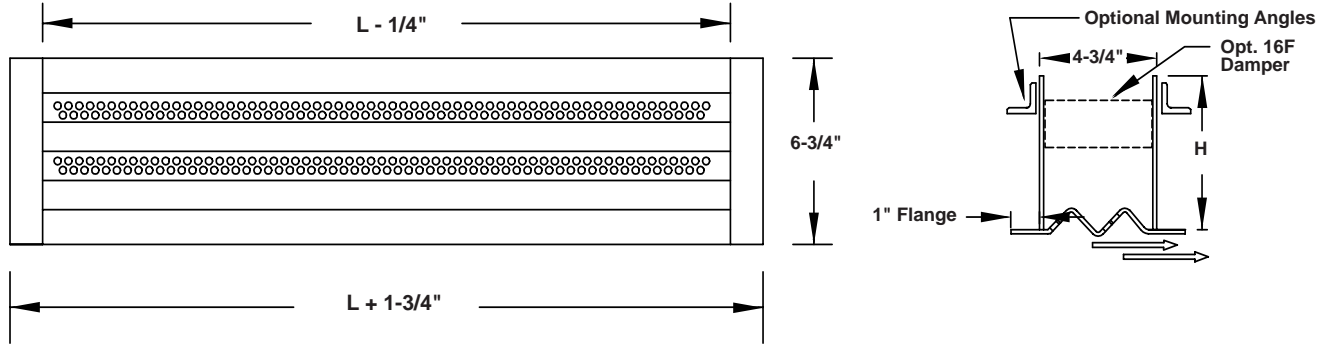


SEG-9LS3H2 SECURITY DIFFUSER

STEEL CONSTRUCTION - ONE WAY SUPPLY

Complies with NIC recommendations and California BoP Title 24



STANDARD CONSTRUCTION

Face: 10 ga. thick steel stitch welded to sleeve. 1" face flange.
Hole Pattern: 3/16" diameter holes on 9/32" staggered centers.
Sleeve: 10 ga. steel with continuously welded seams.
Finish: Two part polyurethane inside and out. White.
 Maximum single piece section is 48"

REQUIRED CONSTRUCTION:

- Face Material:** ☐ 10 ga. steel (Std.)
- Hole Pattern:** ☐ 3/16" dia. holes on 9/32" centers (Std.)
- Face Flange "F"** ☐ 1" (Std.)
☐ 1-1/2" for mounting option 24
- Sleeve Material:** ☐ 10 ga. steel (Std.)
☐ Other _____
- Finish:** ☐ White (Std.)
☐ Other _____
- Other Material:** ☐ **SEG-9LS3H2A**
 all 1/8" thick aluminum construction
- ☐ **SEG-9LS3H2SS**
 all stainless steel construction,
 12 ga. type 304.

MOUNTING OPTIONS:


- ☐ **11A.** Two loose pieces of 1" x 1" x 3/16" mill finish angle loose for field welding. Length equal to longest side of diffuser. Other angle size _____
- ☐ **11B.** Rear angle frame of 1" x 1" x 3/16" mill finish steel completely assembled for field welding. Other angle size _____
- ☐ **12A.** Rear angle frame for bolting to sleeve. 1" x 1" x 3/16" steel with bolt holes 8" o.c. for 1/4" dia. bolts. No holes in sleeve. No bolts, nuts or washers. Other angle size _____
- ☐ **12B.** Same as **12A** with the addition of bolt holes in sleeve. (Advise ceiling thickness). Other angle size _____
- ☐ **24.** Countersunk screw holes in face 10" o.c. with #10-24 x 2" long Torx security machine screws for 1-1/2" maximum ceiling thickness. 1" x 1" x 1/8" steel angle frame with matching holes and foldover nuts. Requires 1-1/2" flange.
- ☐ **25.** Countersunk screw holes in face 10" o.c. with #10 x 1-1/2" long Torx security sheet metal screws. Other screw length _____

ACCESSORIES:

- ☐ **16F.** Face operated damper for total volume control. Dampers are adjustable using flat bladed screwdriver.
- ☐ **ADP.** Supply plenums, 24 ga. galvanized steel, insulated or non-insulated. Furnished loose for field installation. 11-1/2" standard height.
☐ Insulated ☐ Non-insulated Inlet Size _____
- ☐ **Other:** _____

Qty.	Listed Length L	Sleeve O.D.		Ceiling Opening		Sleeve Height H	Ceiling Thickness	Accessories	Mounting Option	Tag
		L	W	L	W					

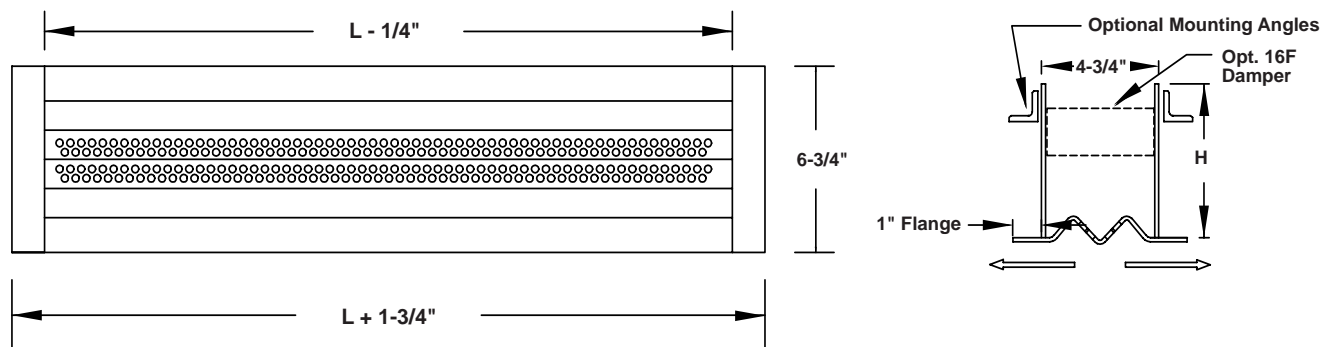
To maintain KEES' policy of continuous product improvement, we reserve the right to change prices, specifications, ratings, or dimensions without prior notice or obligation.

Project				Location			
Architect / Engineer					 <div>KEES INCORPORATED Elkhart Lake, WI 53020 Phone: (920) 876-3391 FAX: (920) 876-3065 Website: www.kees.com</div>		
Contractor			Dwg. No.	SEG-9LS3H2 01/21/13			
Representative			Date				

SEG-9LS3TO SECURITY DIFFUSER

STEEL CONSTRUCTION - TWO WAY SUPPLY

Complies with NIC recommendations and California BoP Title 24



STANDARD CONSTRUCTION

Face: 10 ga. thick steel stitch welded to sleeve. 1" face flange.
Hole Pattern: 3/16" diameter holes on 9/32" staggered centers.
Sleeve: 10 ga. steel with continuously welded seams.
Finish: Two part polyurethane inside and out. White.
 Maximum single piece section is 48"

REQUIRED CONSTRUCTION:

- Face Material:** ☐ 10 ga. steel (Std.)
- Hole Pattern:** ☐ 3/16" dia. holes on 9/32" centers (Std.)
- Face Flange "F"** ☐ 1" (Std.)
☐ 1-1/2" for mounting option 24
- Sleeve Material:** ☐ 10 ga. steel (Std.)
☐ Other _____
- Finish:** ☐ White (Std.)
☐ Other _____
- Other Material:** ☐ **SEG-9LS3TOA**
 all 1/8" thick aluminum construction
- ☐ **SEG-9LS3TOSS**
 all stainless steel construction,
 12 ga. type 304.

MOUNTING OPTIONS:

- ☐ **11A.** Two loose pieces of 1" x 1" x 3/16" mill finish angle loose for field welding. Length equal to longest side of diffuser. Other angle size _____
- ☐ **11B.** Rear angle frame of 1" x 1" x 3/16" mill finish steel completely assembled for field welding. Other angle size _____
- ☐ **12A.** Rear angle frame for bolting to sleeve. 1" x 1" x 3/16" steel with bolt holes 8" o.c. for 1/4" dia. bolts. No holes in sleeve. No bolts, nuts or washers. Other angle size _____
- ☐ **12B.** Same as **12A** with the addition of bolt holes in sleeve. (Advise ceiling thickness). Other angle size _____
- ☐ **24.** Countersunk screw holes in face 10" o.c. with #10-24 x 2" long Torx security machine screws for 1-1/2" maximum ceiling thickness. 1" x 1" x 1/8" steel angle frame with matching holes and foldover nuts. Requires 1-1/2" flange.
- ☐ **25.** Countersunk screw holes in face 10" o.c. with #10 x 1-1/2" long Torx security sheet metal screws. Other screw length _____

ACCESSORIES:

- ☐ **16F.** Face operated damper for total volume control. Dampers are adjustable using flat bladed screwdriver. Two sections over 24".
- ☐ **ADP.** Supply plenums, 24 ga. galvanized steel, internally insulated or non-insulated. Furnished loose for field installation. 11-1/2" standard height.
☐ Insulated ☐ Non-insulated Inlet Size _____
- ☐ **Other:** _____

Qty.	Listed Length L	Sleeve O.D.		Ceiling Opening		Sleeve Height H	Ceiling Thickness	Accessories	Mounting Option	Tag
		L	W	L	W					

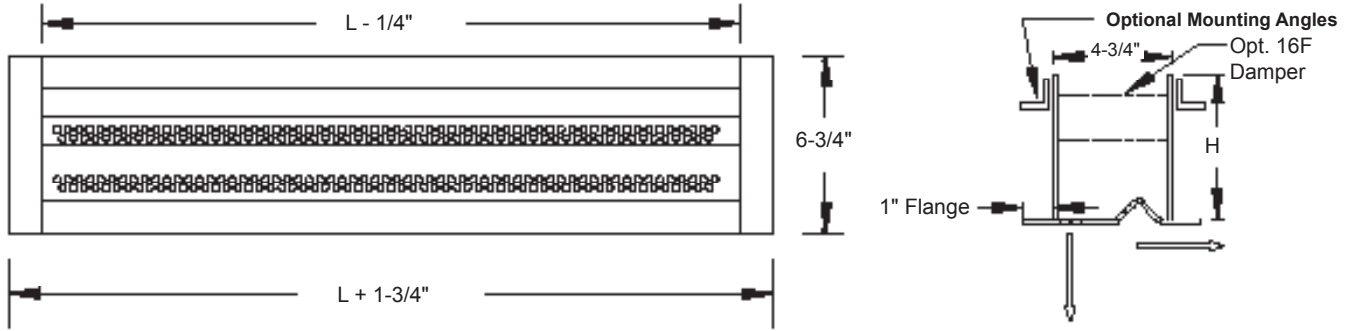
To maintain KEES' policy of continuous product improvement, we reserve the right to change prices, specifications, ratings, or dimensions without prior notice or obligation.

Project		Location		
Architect / Engineer			 KEES INCORPORATED Elkhart Lake, WI 53020 Phone: (920) 876-3391 FAX: (920) 876-3065 Website: www.kees.com	
Contractor		Dwg. No.		SEG-9LS3TO 01/21/13
Representative		Date		

SEG-9LS3VH SECURITY DIFFUSER (OMH APPROVED)

SUPPLY VERTICAL/HORIZONTAL

Complies with NIC recommendations and California BoP Title 24



STANDARD CONSTRUCTION

Face: 10 ga. thick steel stitch welded to sleeve. 1" face flange.
Hole Pattern: 3/16" diameter holes on 9/32" staggered centers.
Sleeve: 10 ga. steel with continuously welded seams.
Finish: Two part polyurethane inside and out. White.
 Maximum single piece section is 48"

REQUIRED CONSTRUCTION:

- Face Material:** ☐ 10 ga. steel (Std.)
- Hole Pattern:** ☐ 3/16" dia. holes on 9/32" centers (Std.)
- Face Flange "F"** ☐ 1" (Std.)
☐ 1-1/2" for mounting option 24
- Sleeve Material:** ☐ 10 ga. steel (Std.)
☐ Other _____
- Finish:** ☐ White (Std.)
☐ Other _____
- Other Material:** ☐ **SEG-9LS3VHA**
 all 1/8" thick aluminum construction
- ☐ **SEG-9LS3VHSS**
 all stainless steel construction,
 12 ga. type 304.

MOUNTING OPTIONS:


- ☐ **11A.** Two loose pieces of 1" x 1" x 3/16" mill finish angle loose for field welding. Length equal to longest side of diffuser. Other angle size _____
- ☐ **11B.** Rear angle frame of 1" x 1" x 3/16" mill finish steel completely assembled for field welding. Other angle size _____
- ☐ **12A.** Rear angle frame for bolting to sleeve. 1" x 1" x 3/16" steel with bolt holes 8" o.c. for 1/4" dia. bolts. No holes in sleeve. No bolts, nuts or washers. Other angle size _____
- ☐ **12B.** Same as **12A** with the addition of bolt holes in sleeve. (Advise ceiling thickness). Other angle size _____
- ☐ **24.** Countersunk screw holes in face 10" o.c. with #10-24 x 2" long Torx security machine screws for 1-1/2" maximum ceiling thickness. 1" x 1" x 1/8" steel angle frame with matching holes and foldover nuts. Requires 1-1/2" flange.
- ☐ **25.** Countersunk screw holes in face 10" o.c. with #10 x 1-1/2" long Torx security sheet metal screws. Other screw length _____

ACCESSORIES:

- ☐ **16F.** Face operated damper for total volume control. Dampers are adjustable using flat bladed screwdriver. Two sections over 24".
- ☐ **ADP.** Supply plenums, 24 ga. galvanized steel, internally insulated or non-insulated. Furnished loose for field installation. 11-1/2" standard height.
☐ Insulated ☐ Non-insulated Inlet Size _____
- ☐ **Other:** _____

Qty.	Listed Length L	Sleeve O.D.		Ceiling Opening		Sleeve Height H	Ceiling Thickness	Accessories	Mounting Option	Tag
		L	W	L	W					

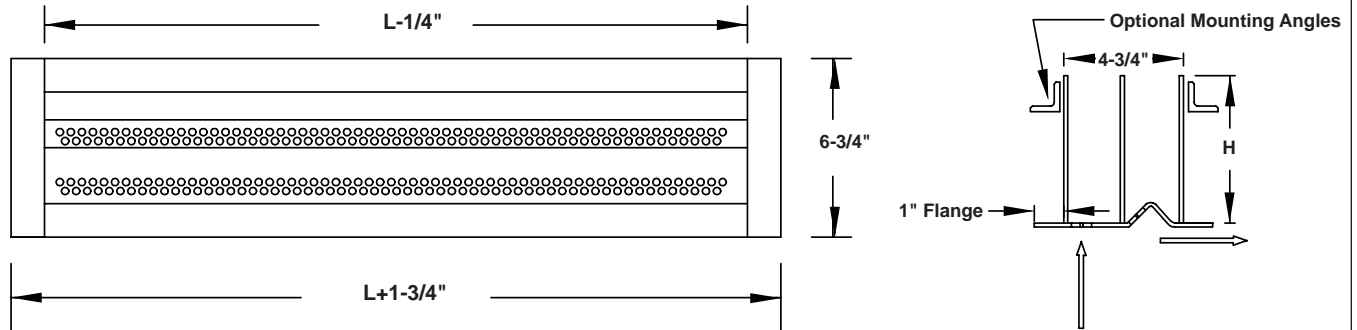
To maintain KEESS' policy of continuous product improvement, we reserve the right to change prices, specifications, ratings, or dimensions without prior notice or obligation.

Project				Location	<div></div> <div>KEES INCORPORATED Elkhart Lake, WI 53020 Phone: (920) 876-3391 FAX: (920) 876-3065 Website: www.kees.com</div>	
Architect / Engineer						
Contractor		Dwg. No.	SEG-9LS3VH 06/01/23			
Representative		Date				

SEG-9LS3SR SECURITY DIFFUSER

STEEL CONSTRUCTION - SUPPLY / RETURN

Complies with NIC recommendations and California BoP Title 24



STANDARD CONSTRUCTION

Face: 10 ga. thick steel stitch welded to sleeve. 1" face flange.
Hole Pattern: 3/16" diameter holes on 9/32" staggered centers.
Sleeve: 10 ga. steel with continuously welded seams.
Divider: 14 ga. steel titch welded to face and sleeve.
Finish: Two part polyurethane inside and out. White.
 Maximum single piece section is 48"

REQUIRED CONSTRUCTION:

- Face Material:** ☐ 10 ga. steel (Std.)
- Hole Pattern:** ☐ 3/16" dia. holes on 9/32" centers (Std.)
- Face Flange "F"** ☐ 1" (Std.)
☐ 1-1/2" for mounting option 24
- Sleeve Material:** ☐ 10 ga. steel (Std.)
☐ Other _____
- Finish:** ☐ White (Std.)
☐ Other _____
- Other Material:** ☐ **SEG-9LS3SRA**
 all 1/8" thick aluminum construction
- ☐ **SEG-9LS3SRSS**
 all stainless steel construction,
 12 ga. type 304.

MOUNTING OPTIONS:

- ☐ **11A.** Two loose pieces of 1" x 1" x 3/16" mill finish angle loose for field welding. Length equal to longest side of diffuser. Other angle size _____
- ☐ **11B.** Rear angle frame of 1" x 1" x 3/16" mill finish steel completely assembled for field welding. Other angle size _____
- ☐ **12A.** Rear angle frame for bolting to sleeve. 1" x 1" x 3/16" steel with bolt holes 8" o.c. for 1/4" dia. bolts. No holes in sleeve. No bolts, nuts or washers. Other angle size _____
- ☐ **12B.** Same as **12A** with the addition of bolt holes in sleeve. (Advise ceiling thickness). Other angle size _____
- ☐ **24.** Countersunk screw holes in face 10" o.c. with #10-24 x 2" long Torx security machine screws for 1-1/2" maximum ceiling thickness. 1" x 1" x 1/8" steel angle frame with matching holes and foldover nuts. Requires 1-1/2" flange.
- ☐ **25.** Countersunk screw holes in face 10" o.c. with #10 x 1-1/2" long Torx security sheet metal screws. Other screw length _____

ACCESSORIES:

- ☐ **16F.** Face operated damper for total volume control. Dampers are adjustable using flat bladed screwdriver. Two sections over 24".
- ☐ **ADP.** Supply plenums, 24 ga. galvanized steel, internally insulated or non-insulated. Furnished loose for field installation. 11-1/2" standard height.
☐ Insulated ☐ Non-insulated Inlet Size _____
- ☐ **Other:** _____

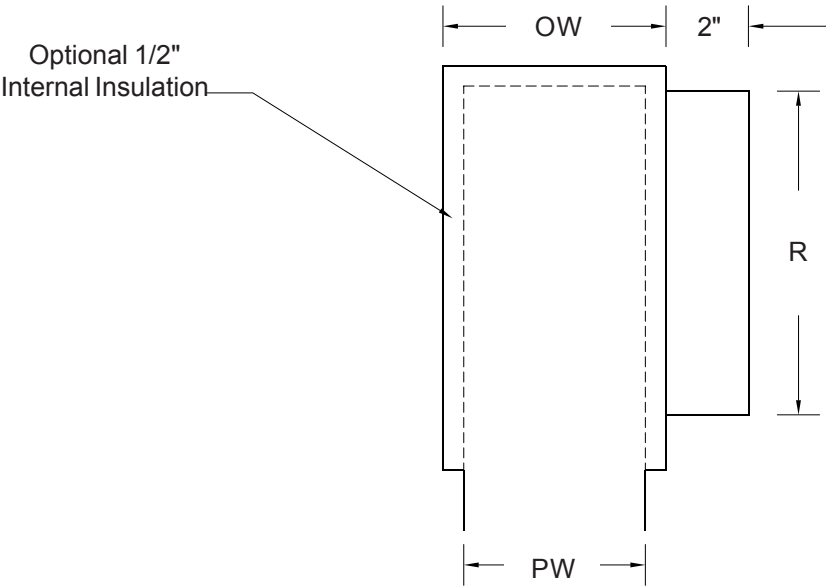
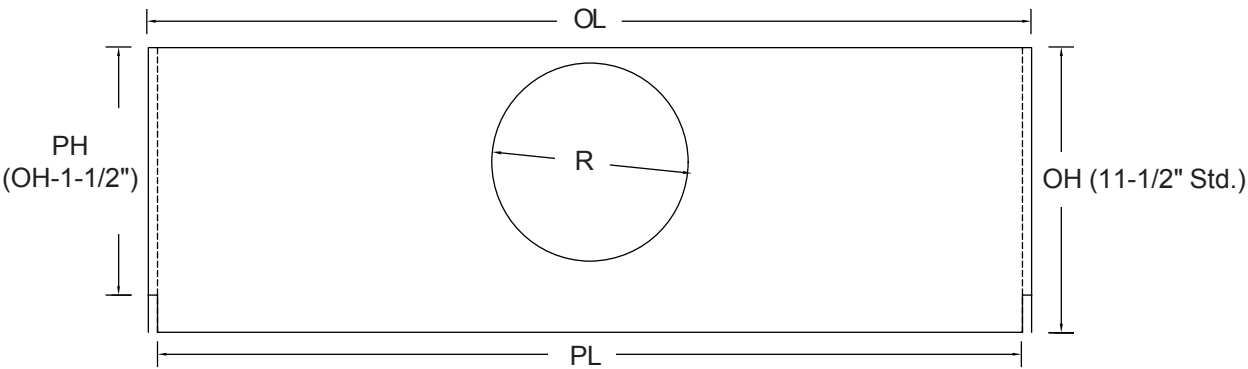
Qty.	Listed Length L	Sleeve O.D.		Ceiling Opening		Sleeve Height H	Ceiling Thickness	Accessories	Mounting Option	Tag
		L	W	L	W					

To maintain KEESS' policy of continuous product improvement, we reserve the right to change prices, specifications, ratings, or dimensions without prior notice or obligation.

Project		Location		
Architect / Engineer				
Contractor		Dwg. No.	SEG-9LS3SR 01/21/13	
Representative		Date		

KEES INCORPORATED
 Elkhart Lake, WI 53020
 Phone: (920) 876-3391
 FAX: (920) 876-3065
 Website: www.kees.com

ADP PLENUM
FOR USE WITH
SEG-9LS3 SECURITY DIFFUSER
TWO WAY THROW PATTERN




Note 1) Collars offset on 48" lengths
2) Inlets 10" and larger will be oval

24 ga. galvanized steel construction.

Qty.	Diffuser Listed Length	Plenum Length		Plenum Height		Plenum Inlet	Plenum Width		Internal Insulation		Tag
		OL	PL	OH	PH	R	OW	PW	Yes	No	
	24"	23-7/8"	23-3/8"				5-3/8"	4-3/8"			
	36"	35-7/8"	35-3/8"				5-3/8"	4-3/8"			
	48"	47-7/8"	47-3/8"				5-3/8"	4-3/8"			

To maintain KEES' policy of continuous product improvement, we reserve the right to change prices, specifications, ratings, or dimensions without prior notice or obligation.

Project		Location			
Engineer				KEES INCORPORATED 400 S. Industrial Drive Olathe, KS 66061 Tel: 913.763.1111 Fax: 913.763.1112 www.keesinc.com	
Architect		Dwg. No.			SEG-9LSADP 11/07/06
Contractor		Date			