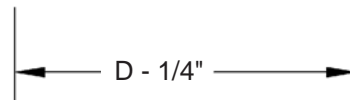


GR-B1RD ROUND SECURITY GRATES

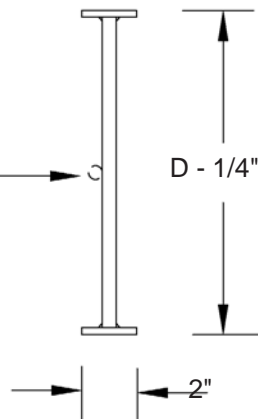
1/2" ROUND A-36
MILD STEEL
VERTICAL BARS
6" O.C.

BARS WELDED TO FRAME AND
AT INTERSECTIONS

A-36 MILD STEEL FRAME WELDED
FULL LENGTH AT JOINT
2" X 3/16" ON SIZES UNDER 8"
2" X 1/4" ON SIZES 8" DIA. AND OVER



1/2" ROUND A-36
MILD STEEL
HORIZONTAL BARS
6" O.C.



TWO PART POLYURETHANE
WHITE PRIME COAT FINISH

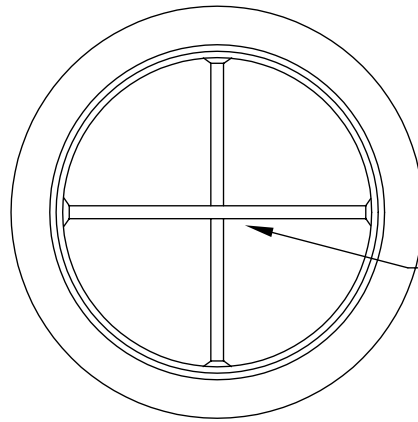
To maintain KEES' policy of continuous product improvement, we reserve the right to change prices, specifications, ratings or dimensions without notice or obligation.

Project		Location	
Architect / Engineer			
Contractor		Dwg. No.	GR-B1RDw 07/02/10
Representative		Date	

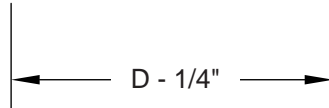


KEES INCORPORATED
Elkhart Lake, WI 53020
Phone: (920) 876-3391
Fax: (920) 876-3065
Website: www.kees.com

GR-C1RD SECURITY GRATE

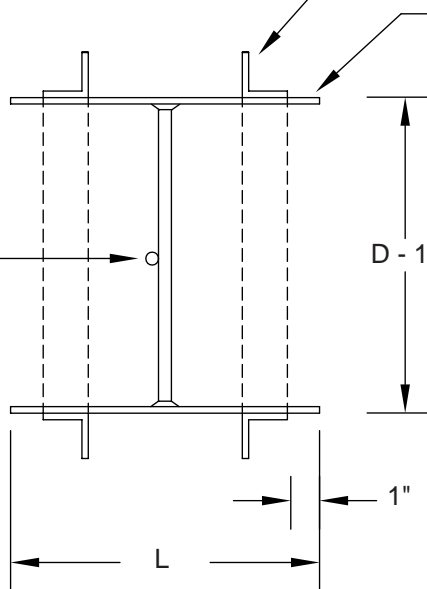


BARS ARE WELDED
TO SLEEVE AND AT
INTERSECTIONS



TWO ANGLE RINGS. ONE
FACTORY STITCH WELDED TO
SLEEVE, ONE LOOSE FOR FIELD
WELDING (UNPAINTED). ANGLE
SIZE VARIES WITH DIAMETER:
6-11" DIA. 1-1/4" x 1-1/4" x 1/8"
12-15" DIA. 1-1/2" x 1-1/2" x 1/8"
16-24" DIA. 1-1/2" x 1-1/2" x 3/16"
25-48" DIA. 2" x 2" x 3/16"

1/2" ROUND
A-36 MILD STEEL
BARS 6" O.C. BOTH
WAYS



10 GA. STEEL SLEEVE WITH
CONTINUOUSLY WELDED SEAMS

BARS WILL BE CENTERED IN SLEEVE
UNLESS INDICATED OTHERWISE

TWO PART POLYURETHANE
WHITE PRIME COAT FINISH

To maintain KEES' policy of continuous product improvement, we reserve the right to change prices, specifications, ratings or dimensions without notice or obligation.

Project	Location		
Architect / Engineer			
Contractor	Dwg. No.	GR-C1RDw 12/22/03	
Representative	Date		



KEES INCORPORATED
Elkhart Lake, WI 53020
Phone: (920) 876-3391
FAX: (920) 876-3065
Website: www.kees.com