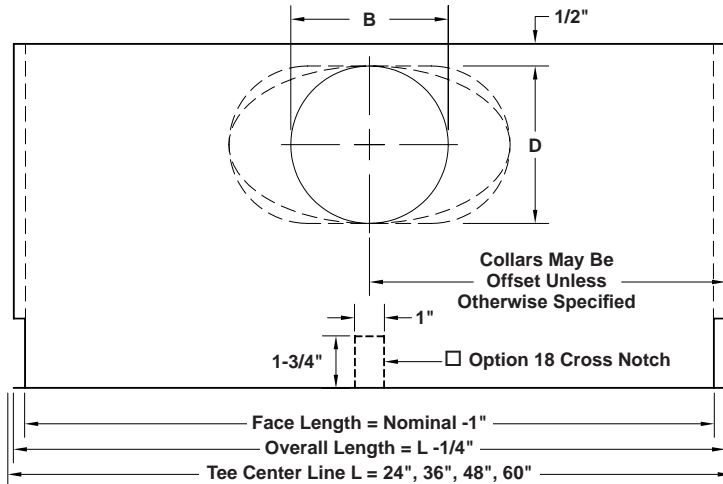


# MODEL "F" DIFFUSER WITH FIXED BLADE FOR USE WITH 15/16" WIDE TEE CEILINGS

## 1 thru 4 Slot Models

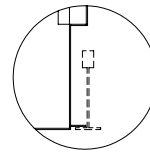


MODEL F-11  
1-Slot  
1-Way

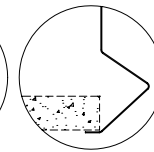
☐ Option 2  
Inlet Damper

☐ Option 1  
Internal Insulation

☐ Option 32  
Reverse Collar  
Orientation



End Bracket



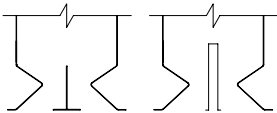
Tile Flange

W

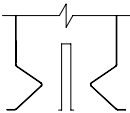
## SUPPLY PATTERNS - 2, 3 & 4 SLOTS F-22, F-32 & F-42 SHOWN WITH OPTION 4

MODEL	DIFFUSER WIDTH W			NOMINAL INLET SIZE	B	D	H
	ONE WAY	OPT. 3	OPT. 4				
F-11	1.975	-	-	6" RD.	5-7/8"	5-7/8"	11-1/4"
F-21	3.631	-	-	8" RD.	7-7/8"	7-7/8"	
F-22	-	4.079	4.641	10" OV.	11-1/2"	8"	
F-31	5.285	-	-	12" SLOT	14-1/2"	8"	
F-32	-	5.734	6.292	10" RD.	9-7/8"	9-7/8"	13-1/4"
F-41	6.940	-	-	12" OV.	13-7/8"	9-9/16"	
F-42	-	7.389	7.947	12" RD.	11-7/8"	11-7/8"	15-1/4"

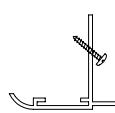
## ACCESSORY OPTIONS



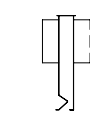
☐ Option 3  
Factory installed  
15/16" Wide  
Center T  
for F-22, F-32  
or F-42 units.



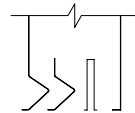
☐ Option 4  
Slot provided in  
ends for F-22,  
F-32 or F-42 units  
to fit astride ceiling  
grid T-bar by  
others.



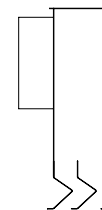
☐ Option 12  
Frame for concealed  
fastening. Off-white  
finish. Shipped loose.  
Field Drilled. Requires  
Opt. 3 for F-22, F-32 or  
F-42 units.



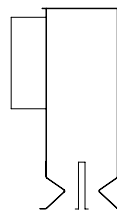
☐ Option 32  
Reverse collar  
orientation.  
(Standard is as shown.)



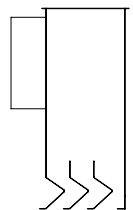
☐ Option 33  
Vertical throw  
option.



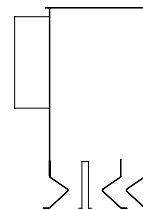
MODEL F-21  
2-Slot  
1-Way



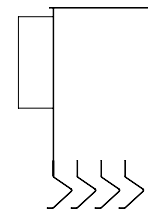
MODEL F-22  
2-Slot  
2-Way



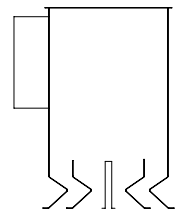
MODEL F-31  
3-Slot  
1-Way



MODEL F-32  
3-Slot  
2-Way



MODEL F-41  
4-Slot  
1-Way



MODEL F-42  
4-Slot  
2-Way

**Material:** 24 gauge zinc coated steel.

**Finish:** All white face and interior.

**Insulation:** 1/4" for 1 slot units and 1/2" for 2 or more slot units.

Inlet Collar Location:

Inlet collar may be offset for packaging purposes.

Quantity	Model	Length L	Height H	Insulation	Collar Size	Round or Oval Collar	Options	Tag

To maintain KEES' policy of continuous product improvement, we reserve the right to change prices, specifications, ratings or dimensions without notice or obligation.

Project		Location	
Engineer			
Architect		Dwg. No.	SD-F
Contractor		Date	05/10



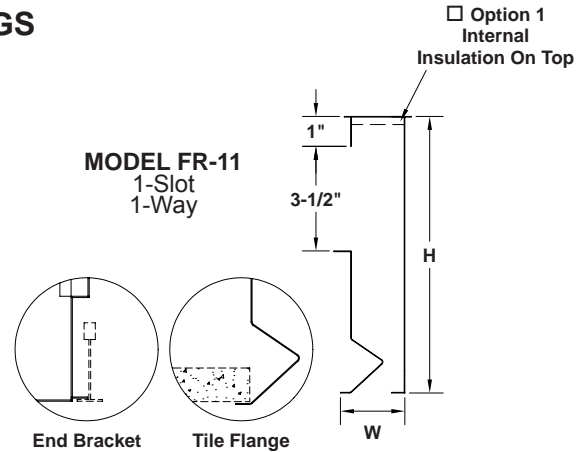
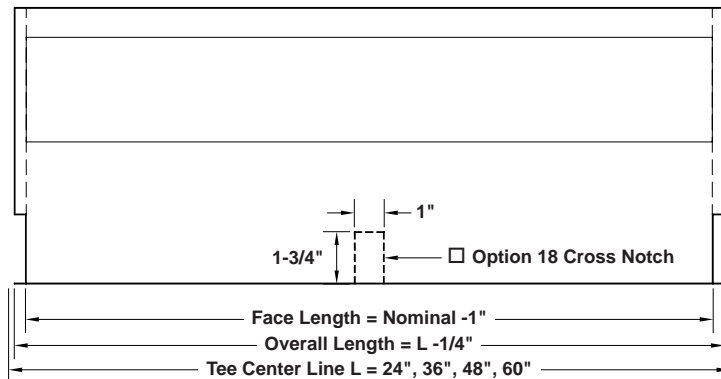
**KEES INCORPORATED**  
400 S. Industrial Dr.  
Elkhart Lake, WI 53020  
Phone: (920) 876-3391  
Fax: (920) 876-3065  
Website: www.kees.com

# MODEL "FR" DIFFUSER WITH FIXED BLADE

## 1 thru 4 Slot Models

### OPEN SIDE RETURN

### FOR USE WITH 15/16" WIDE TEE CEILINGS

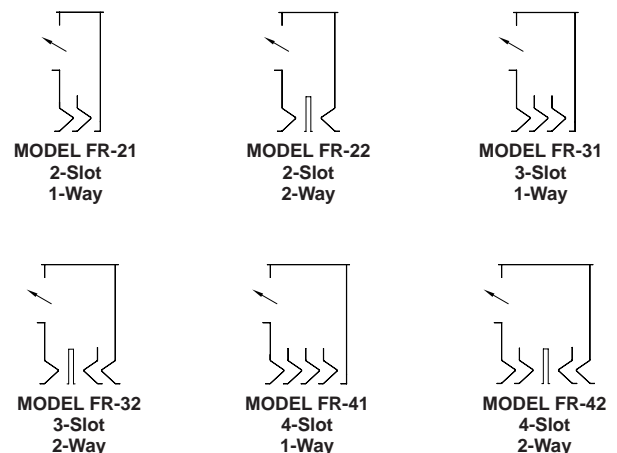


MODEL	DIFFUSER WIDTH W			H
	ONE WAY	OPT. 3	OPT. 4	
F-11	1.975	-	-	9-1/4"
F-21	3.631	-	-	
F-22	-	4.079	4.641	
F-31	5.285	-	-	
F-32	-	5.734	6.292	
F-41	6.940	-	-	
F-42	-	7.389	7.947	

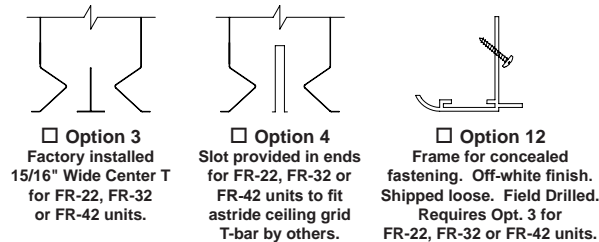
**FOR DUCTED RETURN**  
**SEE REVERSE SIDE**

#### NON-DUCTED RETURN PATTERNS - 2, 3 & 4 SLOTS

#### FR-22, FR-32 & FR-42 SHOWN WITH OPTION 4



#### ACCESSORY OPTIONS



**Material:** 24 gauge zinc coated steel.

**Finish:** All white face and interior.

**Insulation:** 1/4" for 1 slot units and 1/2" for 2 or more slot units.

Quantity	Model	Length L	Insulation	Options	Tag

To maintain KEES' policy of continuous product improvement, we reserve the right to change prices, specifications, ratings or dimensions without notice or obligation.

Project		Location	
Engineer			
Architect		Dwg. No.	SD-FR
Contractor		Date	05/10



**KEES INCORPORATED**  
400 S. Industrial Dr.  
Elkhart Lake, WI 53020  
Phone: (920) 876-3391  
Fax: (920) 876-3065  
Website: www.kees.com