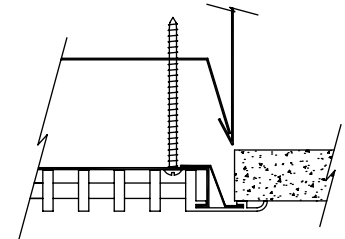
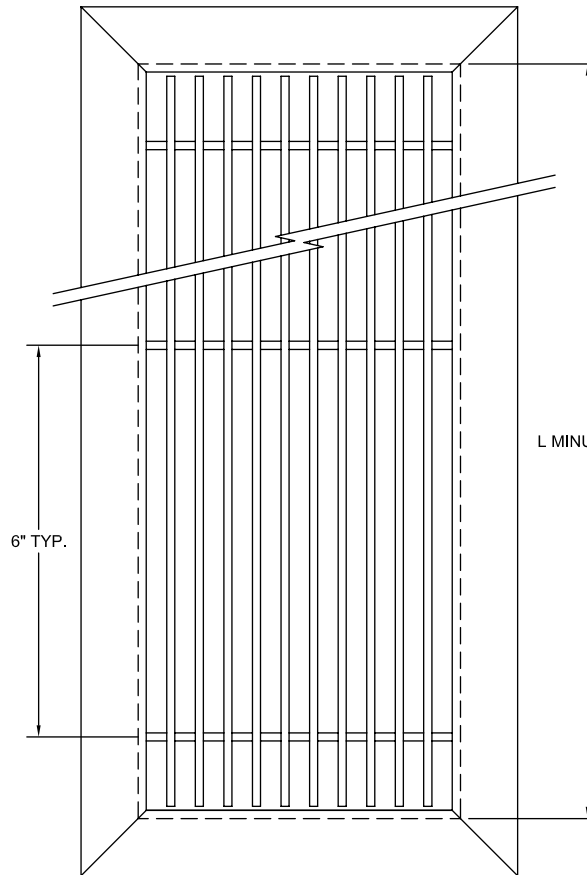
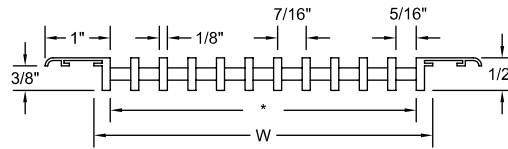




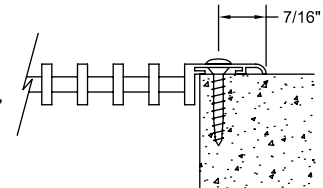
# ARCHITECTURAL WALL / SILL BAR GRILLES

## ABG-050 1/2" Deep Bar Grille

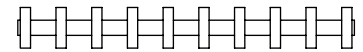
| Duct Width | Number of Bars * |           |
|------------|------------------|-----------|
|            | With Frame       | Core Only |
| 0.75       |                  | 2         |
| 1          | 1                | 3         |
| 1.5        | 2                | 4         |
| 2          | 3                | 5         |
| 2.5        | 4                | 6         |
| 3          | 5                | 7         |
| 3.5        | 6                | 8         |
| 4          | 7                | 9         |
| 4.5        | 8                | 10        |
| 4.75       | 9                | 11        |
| 5          | 10               | 12        |
| 5.5        | 11               | 13        |
| 6          | 12               | 14        |
| 6.5        | 13               | 15        |
| 7          | 14               | 16        |
| 7.5        | 15               | 17        |
| 8          | 16               | 18        |
| 8.25       | 17               | 19        |
| 8.5        | 18               | 20        |
| 9          | 19               | 21        |
| 9.5        | 20               | 22        |
| 10         | 21               | 23        |
| 10.5       | 22               | 24        |
| 11         | 23               | 25        |
| 11.5       | 24               | 26        |
| 11.75      | 25               | 27        |
| 12         | 26               | 28        |



**MOUNTING OPTION X**  
DUCT BRACKETS



**MOUNTING OPTION A**  
#8 SCREWS WITH  
COUNTERSUNK HOLES



**CORE ONLY OPTION**  
FRAME STYLE CO

\* Available core widths limited to integral bar quantities and outside bar spacing shown.

- All aluminum construction with 18-8 stainless steel fasteners.
- 1/8" wide fixed position bars.
- 7/16" centerline bar spacing.
- Minimum duct width is 1" (FM Frame) or 3/4" (core only).
- Maximum length per section is 96".
- Painted finish available in matte silver, white, satin black or dark bronze. Also available in mill finish. Contact factory for other special colors and finishes.

## FM FRAME

| Qty. | Listed Size |   | Frame Style | Mounting Option | Finish | Tag |
|------|-------------|---|-------------|-----------------|--------|-----|
|      | L           | W |             |                 |        |     |
|      |             |   |             |                 |        |     |
|      |             |   |             |                 |        |     |
|      |             |   |             |                 |        |     |
|      |             |   |             |                 |        |     |
|      |             |   |             |                 |        |     |
|      |             |   |             |                 |        |     |

To maintain KEES' policy of continuous product development, we reserve the right to change prices, specifications, ratings and dimensions without notice or obligation.

|                   |  |  |  |                 |                   |  |
|-------------------|--|--|--|-----------------|-------------------|--|
| <b>Project</b>    |  |  |  | <b>Location</b> |                   |  |
| <b>Engineer</b>   |  |  |  | <b>Dwg. No.</b> | <b>SD-ABG-050</b> | <b>KEES INCORPORATED</b><br>400 S. Industrial Dr.<br>Elkhart Lake, WI 53020<br>Phone: (920) 876-3391<br>Fax: (920) 876-3065<br>Website: www.kees.com |
| <b>Architect</b>  |  |  |  | <b>Date</b>     | <b>05/12</b>      |  |
| <b>Contractor</b> |  |  |  |                 |                   |  |