



KITCHEN EXHAUST GREASE DUCT ACCESS DOOR

Models KEDA and KEDA-R

KEES kitchen grease exhaust duct access doors provide efficient access to the interior of welded grease ducts to facilitate inspection and cleaning and help prevent dangerous grease buildup. A ceramic fiber gasket maintains a greaseproof, fire-tight seal and allows use with temperatures up to 2300°F. Welded to the side or top of ducts, these UL-listed doors meet NFPA-96 requirements.



STANDARD MODEL KEDA GREASE DUCT DOOR

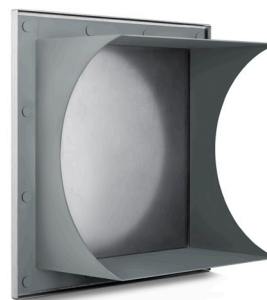
STANDARD SIZES

WIDTH X HEIGHT
6 X 6
8 X 8
10 X 10
12 X 12
14 X 14
16 X 16
18 X 18
24 X 24

Other sizes available upon request.



ROUND DUCT MODEL KEDA-R

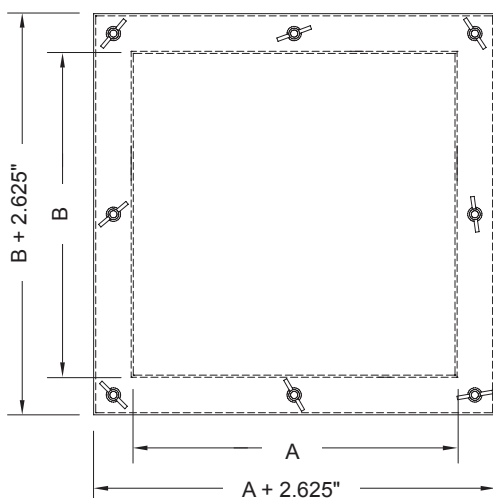


ROUND DUCT MODEL KEDA-R
(BACK VIEW)

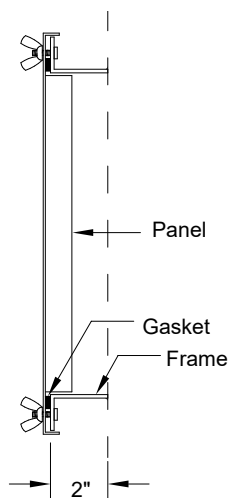


KITCHEN EXHAUST DUCT ACCESS DOOR

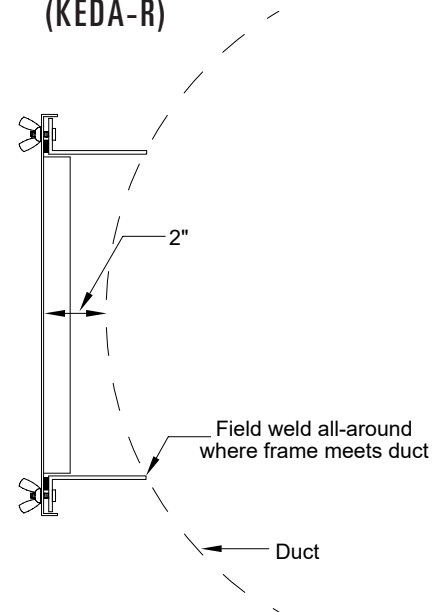
Models KEDA and KEDA-R



RECTANGULAR DUCT (KEDA)



ROUND DUCT (KEDA-R)



STANDARD SIZES

QTY.	SIZE A X B	DUCT OPENING	NUMBER OF BOLTS	DUCT DIAMETER (-R)
	6 X 6	5.75 X 5.75	4	
	8 X 8	7.75 X 7.75	8	
	10 X 10	9.75 X 9.75	8	
	12 X 12	11.75 X 11.75	8	
	14 X 14	13.75 X 13.75	12	
	16 X 16	15.75 X 15.75	12	
	18 X 18	17.75 X 17.75	12	
	24 X 24	23.75 X 23.75	16	

SPECIFICATIONS

14-gauge door frame
14-gauge door panel
Ceramic fiber gasket (2300° F)
1/4" weld studs and wing nuts
Meets NFPA-96 requirements
For use on side or top of duct



OPTIONS

MATERIAL

- ☐ Galvanized Steel (Std.)
- ☐ 304 SS
- ☐ 316 SS

To maintain our policy of continuous product development, we reserve the right to change prices, specifications, ratings, and dimensions without notice or obligation.

Project/Location		KEES INCORPORATED 400 South Industrial Drive Elkhart Lake, WI 53020 Ph: 920.876.3391 F: 920.876.3065 www.kees.com	
Engineer/Architect			
Contractor			
Representative			
		Date	