



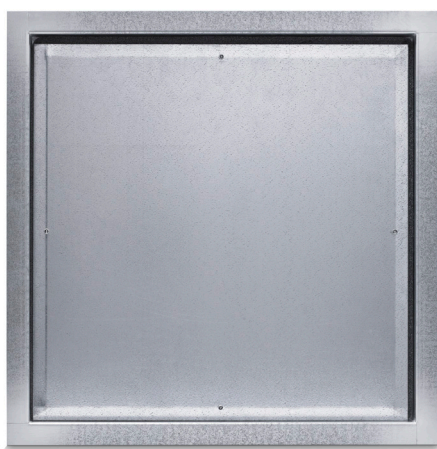
# NEGATIVE PRESSURE RELIEF DUCT ACCESS DOOR

Model ARD

KEES negative pressure relief access doors allow fire dampers to be inspected and reset while protecting the duct from damage. They are installed in positive pressure ducts on the downstream side of the fire dampers and open inward to prevent the duct from collapsing under excessive negative pressure. These doors must be installed vertically to properly relieve 1-1.5" w.g. negative pressure (relief pressure is not adjustable). Under positive pressure the door will automatically return to the closed position.



**MODEL ARD  
(FRONT VIEW)**



**MODEL ARD  
(DESIGNED TO OPEN INWARD)**

## STANDARD SIZES

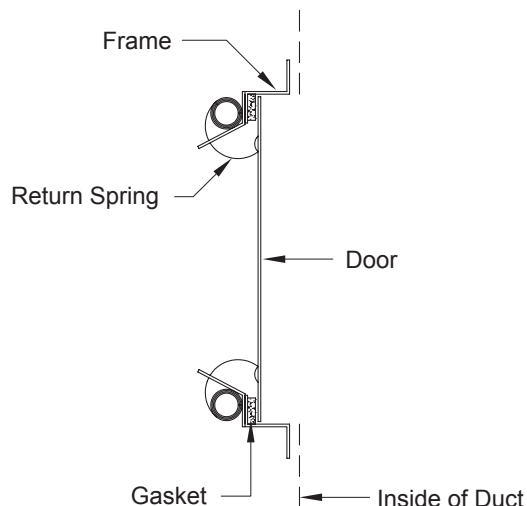
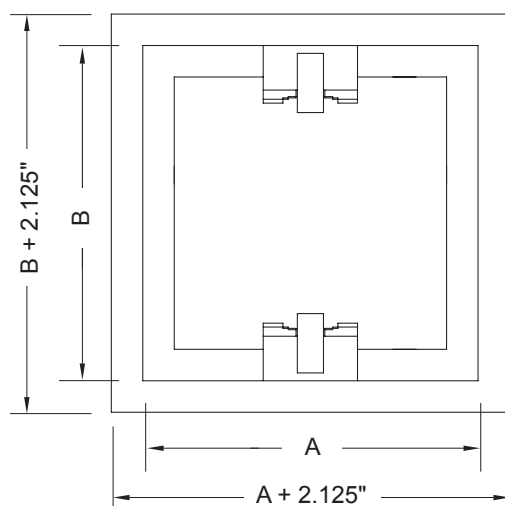
WIDTH X HEIGHT
6 X 10
8 X 8
10 X 10
12 X 12
14 X 14
18 X 18

Other sizes available upon request.



# NEGATIVE PRESSURE RELIEF DUCT ACCESS DOOR

Model ARD



QTY	SIZE A X B	DUCT OPENING	NUMBER OF SPRINGS
	6 X 10	4.5 X 8.5	2
	8 X 8	6.5 X 6.5	2
	10 X 10	8.5 X 8.5	2
	12 X 12	10.5 X 10.5	4
	14 X 14	12.5 X 12.5	4
	18 X 18	16.5 X 16.5	4

## SPECIFICATIONS

16-gauge door frame

16-gauge door panel

Foam gasket

Return springs close door after negative pressure is relieved.

## OPTIONS

### MATERIAL

- ☐ Galvanized Steel (Std.)
- ☐ 304 SS
- ☐ 316 SS

### INSULATION

- ☐ None (Std.)
- ☐ 1" Thick
- ☐ 2" Thick

### VIEW PORT

- ☐ Lexan

To maintain our policy of continuous product development, we reserve the right to change prices, specifications, ratings, and dimensions without notice or obligation.

Project/Location		<b>KEES INCORPORATED</b> 400 South Industrial Drive Elkhart Lake, WI 53020 Ph: 920.876.3391 F: 920.876.3065 <a href="http://www.kees.com">www.kees.com</a>	
Engineer/Architect			
Contractor			
Representative			
		Date	